



Roberts Lab_2011-06-02 18-24-15_CC009827.pcrd

6/2/2011 8:14 PM

Report Information

User: BioRad/Roberts Lab
Data File Name: Roberts Lab_2011-06-02 18-24-15_CC009827.pcrd
Data File Path: C:\Users\Sam\Dropbox\Roberts Lab CFX96 Data\Sam
Well Group Name: All Wells
Report Differs from Last Save: No

Run Setup

Run Information

Run User: Roberts Lab
Run Date: 6/2/2011 6:24 PM
ID:
Notes:
Sample Volume: 20
Temperature Control Mode: Calculated
Lid Temperature: 105
Base Serial Number: CC009827
Optical Head Serial Number: 785BR3659

Protocol

- 1: 98.0°C for 2:00
- 2: 98.0°C for 0:05
- 3: 60.0°C for 0:05
Plate Read
- 4: GOTO 2, 39 more times
- 5: Melt Curve 65.0°C to 95.0°C : Increment 0.2°C 0:10
Plate Read

Plate Display

| | 1 | 2 | 3 | 4 | 5 | 6 | 7 | 8 | 9 | 10 | 11 | 12 |
|---|--------------------------------|--------------------------------|--------------------------------|--------------------------------|--|----------------------------------|--------------------------------|--------------------------------|--------------------------------|--------------------------------|--|----------------------------------|
| A | Unk Actin Gill 1hr C1 | Unk Actin Gill 1hr E1 | Unk Actin Gill 3hr C1 | Unk Actin Gill 3hr E1 | Unk Actin Dg/Gon ad 3hr C1 | Unk Actin Mantle 3hr C4 | Unk GAPDH Gill 1hr C1 | Unk GAPDH Gill 1hr E1 | Unk GAPDH Gill 3hr C1 | Unk GAPDH Gill 3hr E1 | Unk GAPDH Dg/Gon ad 3hr C1 | Unk GAPDH Mantle 3hr C4 |
| B | Unk Actin Gill 1hr C2 | Unk Actin Gill 1hr E2 | Unk Actin Gill 3hr C2 | Unk Actin Gill 3hr E2 | Unk Actin Dg/Gon ad 3hr C2 | Unk Actin Mantle 3hr C6 | Unk GAPDH Gill 1hr C2 | Unk GAPDH Gill 1hr E2 | Unk GAPDH Gill 3hr C2 | Unk GAPDH Gill 3hr E2 | Unk GAPDH Dg/Gon ad 3hr C2 | Unk GAPDH Mantle 3hr C6 |

| | 1 | 2 | 3 | 4 | 5 | 6 | 7 | 8 | 9 | 10 | 11 | 12 |
|---|--------------------------------|--------------------------------|--------------------------------|--------------------------------|--|----------------------------------|--------------------------------|--------------------------------|--------------------------------|--------------------------------|--|----------------------------------|
| C | Unk Actin Gill 1hr C3 | Unk Actin Gill 1hr E3 | Unk Actin Gill 3hr C3 | Unk Actin Gill 3hr E3 | Unk Actin Dg/Gon ad 3hr C3 | Unk Actin Muscle 3hr C1 | Unk GAPDH Gill 1hr C3 | Unk GAPDH Gill 1hr E3 | Unk GAPDH Gill 3hr C3 | Unk GAPDH Gill 3hr E3 | Unk GAPDH Dg/Gon ad 3hr C3 | Unk GAPDH Muscle 3hr C1 |
| D | Unk Actin Gill 1hr C4 | Unk Actin Gill 1hr E4 | Unk Actin Gill 3hr C4 | Unk Actin Gill 3hr E4 | Unk Actin Dg/Gon ad 3hr C4 | Unk Actin Muscle 3hr C2 | Unk GAPDH Gill 1hr C4 | Unk GAPDH Gill 1hr E4 | Unk GAPDH Gill 3hr C4 | Unk GAPDH Gill 3hr E4 | Unk GAPDH Dg/Gon ad 3hr C4 | Unk GAPDH Muscle 3hr C2 |
| E | Unk Actin Gill 1hr C5 | Unk Actin Gill 1hr E5 | Unk Actin Gill 3hr C5 | Unk Actin Gill 3hr E5 | Unk Actin Dg/Gon ad 3hr C6 | Unk Actin Muscle 3hr C3 | Unk GAPDH Gill 1hr C5 | Unk GAPDH Gill 1hr E5 | Unk GAPDH Gill 3hr C5 | Unk GAPDH Gill 3hr E5 | Unk GAPDH Dg/Gon ad 3hr C6 | Unk GAPDH Muscle 3hr C3 |
| F | Unk Actin Gill 1hr C6 | Unk Actin Gill 1hr E6 | Unk Actin Gill 3hr C6 | Unk Actin Gill 3hr E6 | Unk Actin Mantle 3hr C1 | Unk Actin Muscle 3hr C4 | Unk GAPDH Gill 1hr C6 | Unk GAPDH Gill 1hr E6 | Unk GAPDH Gill 3hr C6 | Unk GAPDH Gill 3hr E6 | Unk GAPDH Mantle 3hr C1 | Unk GAPDH Muscle 3hr C4 |
| G | Unk Actin Gill 1hr C7 | Unk Actin Gill 1hr E7 | Unk Actin Gill 3hr C7 | Unk Actin Gill 3hr E7 | Unk Actin Mantle 3hr C2 | Unk Actin Muscle 3hr C6 | Unk GAPDH Gill 1hr C7 | Unk GAPDH Gill 1hr E7 | Unk GAPDH Gill 3hr C7 | Unk GAPDH Gill 3hr E7 | Unk GAPDH Mantle 3hr C2 | Unk GAPDH Muscle 3hr C6 |
| H | Unk Actin Gill 1hr C8 | Unk Actin Gill 1hr E8 | Unk Actin Gill 3hr C8 | Unk Actin Gill 3hr E8 | Unk Actin Mantle 3hr C3 | NTC Actin | Unk GAPDH Gill 1hr C8 | Unk GAPDH Gill 1hr E8 | Unk GAPDH Gill 3hr C8 | Unk GAPDH Gill 3hr E8 | Unk GAPDH Mantle 3hr C3 | NTC GAPDH |

Quantification

Step #: 3

Analysis Mode: Fluorophore

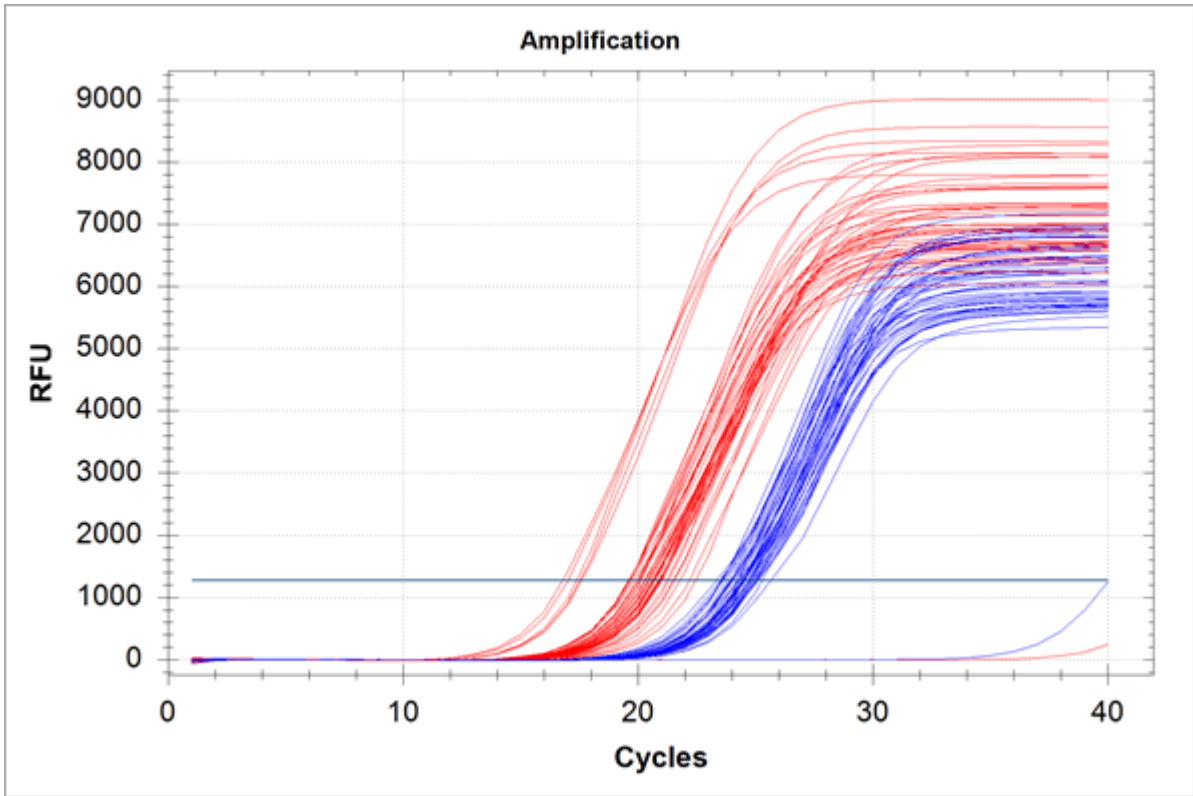
Cq Determination: Single Threshold

Baseline Method:

FAM: Auto Calculated

Threshold Setting:

FAM: 1276.06, Auto Calculated



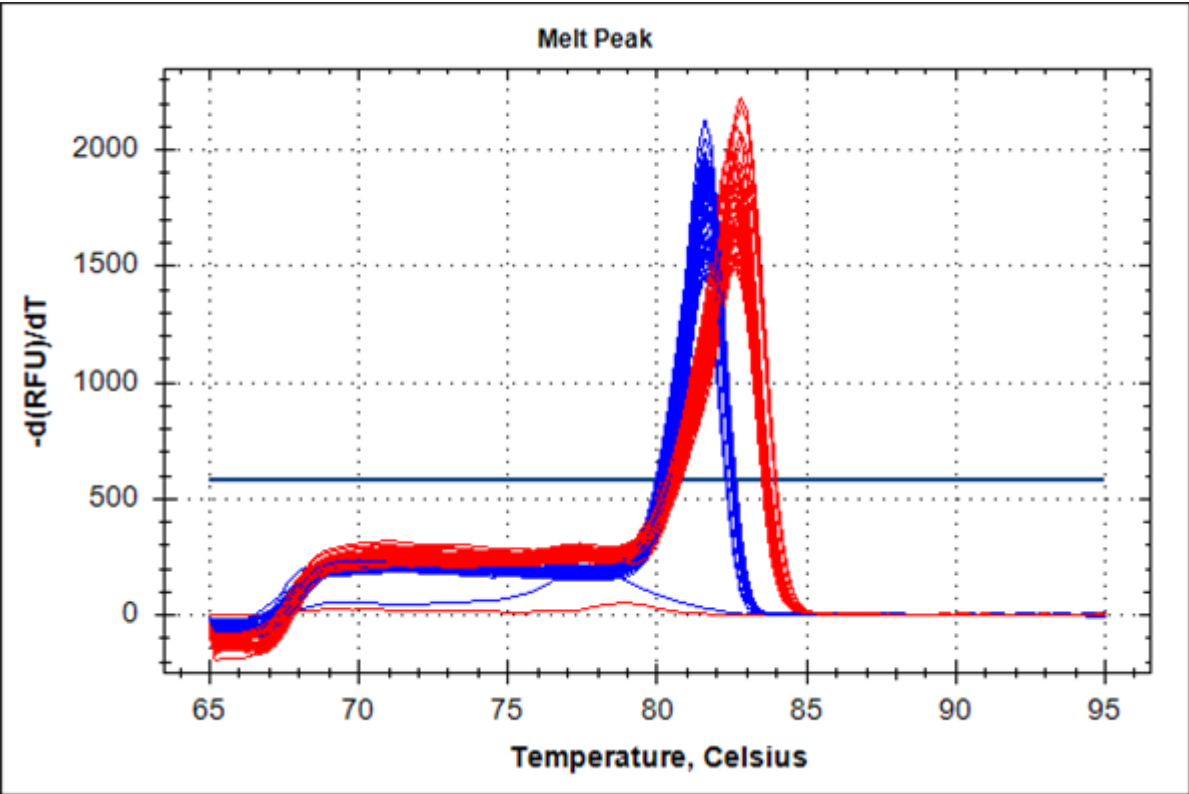
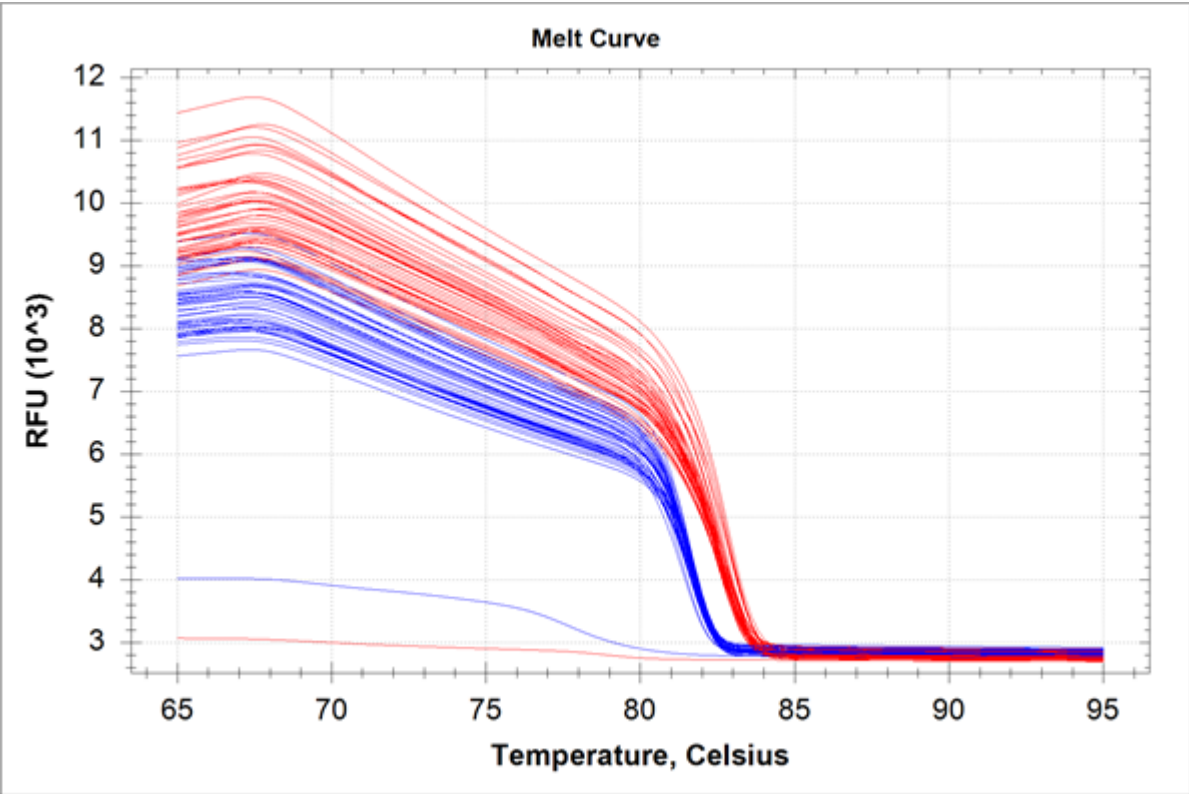
Quantification Data

| Well | Fluor | Target | Content | Sample | Cq | Cq Mean | Cq Std. Dev |
|------|-------|--------|---------|-----------------|-------|---------|-------------|
| A01 | FAM | Actin | Unkn | Gill 1hr C1 | 19.82 | 19.82 | 0.000 |
| A02 | FAM | Actin | Unkn | Gill 1hr E1 | 20.02 | 20.02 | 0.000 |
| A03 | FAM | Actin | Unkn | Gill 3hr C1 | 21.21 | 21.21 | 0.000 |
| A04 | FAM | Actin | Unkn | Gill 3hr E1 | 19.66 | 19.66 | 0.000 |
| A05 | FAM | Actin | Unkn | Dg/Gonad 3hr C1 | 20.52 | 20.52 | 0.000 |
| A06 | FAM | Actin | Unkn | Mantle 3hr C4 | 20.30 | 20.30 | 0.000 |
| A07 | FAM | GAPDH | Unkn | Gill 1hr C1 | 24.26 | 24.26 | 0.000 |
| A08 | FAM | GAPDH | Unkn | Gill 1hr E1 | 24.80 | 24.80 | 0.000 |
| A09 | FAM | GAPDH | Unkn | Gill 3hr C1 | 23.58 | 23.58 | 0.000 |
| A10 | FAM | GAPDH | Unkn | Gill 3hr E1 | 23.33 | 23.33 | 0.000 |
| A11 | FAM | GAPDH | Unkn | Dg/Gonad 3hr C1 | 24.96 | 24.96 | 0.000 |
| A12 | FAM | GAPDH | Unkn | Mantle 3hr C4 | 25.11 | 25.11 | 0.000 |
| B01 | FAM | Actin | Unkn | Gill 1hr C2 | 20.46 | 20.46 | 0.000 |
| B02 | FAM | Actin | Unkn | Gill 1hr E2 | 20.93 | 20.93 | 0.000 |
| B03 | FAM | Actin | Unkn | Gill 3hr C2 | 20.95 | 20.95 | 0.000 |
| B04 | FAM | Actin | Unkn | Gill 3hr E2 | 19.59 | 19.59 | 0.000 |
| B05 | FAM | Actin | Unkn | Dg/Gonad 3hr C2 | 19.60 | 19.60 | 0.000 |
| B06 | FAM | Actin | Unkn | Mantle 3hr C6 | 21.01 | 21.01 | 0.000 |
| B07 | FAM | GAPDH | Unkn | Gill 1hr C2 | 24.56 | 24.56 | 0.000 |
| B08 | FAM | GAPDH | Unkn | Gill 1hr E2 | 24.45 | 24.45 | 0.000 |
| B09 | FAM | GAPDH | Unkn | Gill 3hr C2 | 23.97 | 23.97 | 0.000 |
| B10 | FAM | GAPDH | Unkn | Gill 3hr E2 | 23.48 | 23.48 | 0.000 |
| B11 | FAM | GAPDH | Unkn | Dg/Gonad 3hr C2 | 25.07 | 25.07 | 0.000 |
| B12 | FAM | GAPDH | Unkn | Mantle 3hr C6 | 25.65 | 25.65 | 0.000 |
| C01 | FAM | Actin | Unkn | Gill 1hr C3 | 20.61 | 20.61 | 0.000 |
| C02 | FAM | Actin | Unkn | Gill 1hr E3 | 19.94 | 19.94 | 0.000 |
| C03 | FAM | Actin | Unkn | Gill 3hr C3 | 21.78 | 21.78 | 0.000 |
| C04 | FAM | Actin | Unkn | Gill 3hr E3 | 20.89 | 20.89 | 0.000 |
| C05 | FAM | Actin | Unkn | Dg/Gonad 3hr C3 | 19.60 | 19.60 | 0.000 |
| C06 | FAM | Actin | Unkn | Muscle 3hr C1 | 17.59 | 17.59 | 0.000 |
| C07 | FAM | GAPDH | Unkn | Gill 1hr C3 | 24.43 | 24.43 | 0.000 |
| C08 | FAM | GAPDH | Unkn | Gill 1hr E3 | 23.90 | 23.90 | 0.000 |
| C09 | FAM | GAPDH | Unkn | Gill 3hr C3 | 25.03 | 25.03 | 0.000 |
| C10 | FAM | GAPDH | Unkn | Gill 3hr E3 | 24.45 | 24.45 | 0.000 |
| C11 | FAM | GAPDH | Unkn | Dg/Gonad 3hr C3 | 24.51 | 24.51 | 0.000 |
| C12 | FAM | GAPDH | Unkn | Muscle 3hr C1 | 24.96 | 24.96 | 0.000 |
| D01 | FAM | Actin | Unkn | Gill 1hr C4 | 20.68 | 20.68 | 0.000 |
| D02 | FAM | Actin | Unkn | Gill 1hr E4 | 20.68 | 20.68 | 0.000 |
| D03 | FAM | Actin | Unkn | Gill 3hr C4 | 22.18 | 22.18 | 0.000 |
| D04 | FAM | Actin | Unkn | Gill 3hr E4 | 20.04 | 20.04 | 0.000 |
| D05 | FAM | Actin | Unkn | Dg/Gonad 3hr C4 | 20.98 | 20.98 | 0.000 |
| D06 | FAM | Actin | Unkn | Muscle 3hr C2 | 16.79 | 16.79 | 0.000 |
| D07 | FAM | GAPDH | Unkn | Gill 1hr C4 | 24.69 | 24.69 | 0.000 |
| D08 | FAM | GAPDH | Unkn | Gill 1hr E4 | 24.46 | 24.46 | 0.000 |
| D09 | FAM | GAPDH | Unkn | Gill 3hr C4 | 24.05 | 24.05 | 0.000 |
| D10 | FAM | GAPDH | Unkn | Gill 3hr E4 | 23.62 | 23.62 | 0.000 |
| D11 | FAM | GAPDH | Unkn | Dg/Gonad 3hr C4 | 25.05 | 25.05 | 0.000 |

| Well | Fluor | Target | Content | Sample | Cq | Cq Mean | Cq Std. Dev |
|------|-------|--------|---------|-----------------|-------|---------|-------------|
| D12 | FAM | GAPDH | Unkn | Muscle 3hr C2 | 24.45 | 24.45 | 0.000 |
| E01 | FAM | Actin | Unkn | Gill 1hr C5 | 20.30 | 20.30 | 0.000 |
| E02 | FAM | Actin | Unkn | Gill 1hr E5 | 20.64 | 20.64 | 0.000 |
| E03 | FAM | Actin | Unkn | Gill 3hr C5 | 21.52 | 21.52 | 0.000 |
| E04 | FAM | Actin | Unkn | Gill 3hr E5 | 20.40 | 20.40 | 0.000 |
| E05 | FAM | Actin | Unkn | Dg/Gonad 3hr C6 | 20.67 | 20.67 | 0.000 |
| E06 | FAM | Actin | Unkn | Muscle 3hr C3 | 17.03 | 17.03 | 0.000 |
| E07 | FAM | GAPDH | Unkn | Gill 1hr C5 | 24.69 | 24.69 | 0.000 |
| E08 | FAM | GAPDH | Unkn | Gill 1hr E5 | 24.75 | 24.75 | 0.000 |
| E09 | FAM | GAPDH | Unkn | Gill 3hr C5 | 24.67 | 24.67 | 0.000 |
| E10 | FAM | GAPDH | Unkn | Gill 3hr E5 | 24.36 | 24.36 | 0.000 |
| E11 | FAM | GAPDH | Unkn | Dg/Gonad 3hr C6 | 24.81 | 24.81 | 0.000 |
| E12 | FAM | GAPDH | Unkn | Muscle 3hr C3 | 24.69 | 24.69 | 0.000 |
| F01 | FAM | Actin | Unkn | Gill 1hr C6 | 20.45 | 20.45 | 0.000 |
| F02 | FAM | Actin | Unkn | Gill 1hr E6 | 20.27 | 20.27 | 0.000 |
| F03 | FAM | Actin | Unkn | Gill 3hr C6 | 21.50 | 21.50 | 0.000 |
| F04 | FAM | Actin | Unkn | Gill 3hr E6 | 20.11 | 20.11 | 0.000 |
| F05 | FAM | Actin | Unkn | Mantle 3hr C1 | 20.13 | 20.13 | 0.000 |
| F06 | FAM | Actin | Unkn | Muscle 3hr C4 | 17.38 | 17.38 | 0.000 |
| F07 | FAM | GAPDH | Unkn | Gill 1hr C6 | 23.92 | 23.92 | 0.000 |
| F08 | FAM | GAPDH | Unkn | Gill 1hr E6 | 24.03 | 24.03 | 0.000 |
| F09 | FAM | GAPDH | Unkn | Gill 3hr C6 | 24.86 | 24.86 | 0.000 |
| F10 | FAM | GAPDH | Unkn | Gill 3hr E6 | 23.98 | 23.98 | 0.000 |
| F11 | FAM | GAPDH | Unkn | Mantle 3hr C1 | 24.93 | 24.93 | 0.000 |
| F12 | FAM | GAPDH | Unkn | Muscle 3hr C4 | 24.20 | 24.20 | 0.000 |
| G01 | FAM | Actin | Unkn | Gill 1hr C7 | 20.61 | 20.61 | 0.000 |
| G02 | FAM | Actin | Unkn | Gill 1hr E7 | 20.85 | 20.85 | 0.000 |
| G03 | FAM | Actin | Unkn | Gill 3hr C7 | 21.31 | 21.31 | 0.000 |
| G04 | FAM | Actin | Unkn | Gill 3hr E7 | 20.73 | 20.73 | 0.000 |
| G05 | FAM | Actin | Unkn | Mantle 3hr C2 | 19.60 | 19.60 | 0.000 |
| G06 | FAM | Actin | Unkn | Muscle 3hr C6 | 17.52 | 17.52 | 0.000 |
| G07 | FAM | GAPDH | Unkn | Gill 1hr C7 | 24.34 | 24.34 | 0.000 |
| G08 | FAM | GAPDH | Unkn | Gill 1hr E7 | 24.46 | 24.46 | 0.000 |
| G09 | FAM | GAPDH | Unkn | Gill 3hr C7 | 24.52 | 24.52 | 0.000 |
| G10 | FAM | GAPDH | Unkn | Gill 3hr E7 | 23.56 | 23.56 | 0.000 |
| G11 | FAM | GAPDH | Unkn | Mantle 3hr C2 | 24.48 | 24.48 | 0.000 |
| G12 | FAM | GAPDH | Unkn | Muscle 3hr C6 | 25.28 | 25.28 | 0.000 |
| H01 | FAM | Actin | Unkn | Gill 1hr C8 | 20.88 | 20.88 | 0.000 |
| H02 | FAM | Actin | Unkn | Gill 1hr E8 | 20.04 | 20.04 | 0.000 |
| H03 | FAM | Actin | Unkn | Gill 3hr C8 | 22.44 | 22.44 | 0.000 |
| H04 | FAM | Actin | Unkn | Gill 3hr E8 | 20.02 | 20.02 | 0.000 |
| H05 | FAM | Actin | Unkn | Mantle 3hr C3 | 19.70 | 19.70 | 0.000 |
| H06 | FAM | Actin | NTC | | N/A | 0.00 | 0.000 |
| H07 | FAM | GAPDH | Unkn | Gill 1hr C8 | 24.47 | 24.47 | 0.000 |
| H08 | FAM | GAPDH | Unkn | Gill 1hr E8 | 23.76 | 23.76 | 0.000 |
| H09 | FAM | GAPDH | Unkn | Gill 3hr C8 | 24.20 | 24.20 | 0.000 |
| H10 | FAM | GAPDH | Unkn | Gill 3hr E8 | 23.54 | 23.54 | 0.000 |
| H11 | FAM | GAPDH | Unkn | Mantle 3hr C3 | 24.27 | 24.27 | 0.000 |
| H12 | FAM | GAPDH | NTC | | N/A | 0.00 | 0.000 |

Melt Curve

Step #: 5



Melt Curve Data

| Well | Fluor | Target | Content | Sample | Melt Temp |
|------|-------|--------|---------|-----------------|-----------|
| A01 | FAM | Actin | Unkn | Gill 1hr C1 | 82.60 |
| A02 | FAM | Actin | Unkn | Gill 1hr E1 | 82.60 |
| A03 | FAM | Actin | Unkn | Gill 3hr C1 | 82.60 |
| A04 | FAM | Actin | Unkn | Gill 3hr E1 | 82.60 |
| A05 | FAM | Actin | Unkn | Dg/Gonad 3hr C1 | 82.60 |
| A06 | FAM | Actin | Unkn | Mantle 3hr C4 | 82.60 |
| A07 | FAM | GAPDH | Unkn | Gill 1hr C1 | 81.60 |
| A08 | FAM | GAPDH | Unkn | Gill 1hr E1 | 81.60 |
| A09 | FAM | GAPDH | Unkn | Gill 3hr C1 | 81.60 |
| A10 | FAM | GAPDH | Unkn | Gill 3hr E1 | 81.60 |
| A11 | FAM | GAPDH | Unkn | Dg/Gonad 3hr C1 | 81.60 |
| A12 | FAM | GAPDH | Unkn | Mantle 3hr C4 | 81.80 |
| B01 | FAM | Actin | Unkn | Gill 1hr C2 | 82.60 |
| B02 | FAM | Actin | Unkn | Gill 1hr E2 | 82.60 |
| B03 | FAM | Actin | Unkn | Gill 3hr C2 | 82.60 |
| B04 | FAM | Actin | Unkn | Gill 3hr E2 | 82.60 |
| B05 | FAM | Actin | Unkn | Dg/Gonad 3hr C2 | 82.60 |
| B06 | FAM | Actin | Unkn | Mantle 3hr C6 | 82.60 |
| B07 | FAM | GAPDH | Unkn | Gill 1hr C2 | 81.60 |
| B08 | FAM | GAPDH | Unkn | Gill 1hr E2 | 81.60 |
| B09 | FAM | GAPDH | Unkn | Gill 3hr C2 | 81.60 |
| B10 | FAM | GAPDH | Unkn | Gill 3hr E2 | 81.60 |
| B11 | FAM | GAPDH | Unkn | Dg/Gonad 3hr C2 | 81.60 |
| B12 | FAM | GAPDH | Unkn | Mantle 3hr C6 | 81.60 |
| C01 | FAM | Actin | Unkn | Gill 1hr C3 | 82.60 |
| C02 | FAM | Actin | Unkn | Gill 1hr E3 | 82.60 |
| C03 | FAM | Actin | Unkn | Gill 3hr C3 | 82.60 |
| C04 | FAM | Actin | Unkn | Gill 3hr E3 | 82.60 |
| C05 | FAM | Actin | Unkn | Dg/Gonad 3hr C3 | 82.60 |
| C06 | FAM | Actin | Unkn | Muscle 3hr C1 | 82.80 |
| C07 | FAM | GAPDH | Unkn | Gill 1hr C3 | 81.60 |
| C08 | FAM | GAPDH | Unkn | Gill 1hr E3 | 81.60 |
| C09 | FAM | GAPDH | Unkn | Gill 3hr C3 | 81.60 |
| C10 | FAM | GAPDH | Unkn | Gill 3hr E3 | 81.60 |
| C11 | FAM | GAPDH | Unkn | Dg/Gonad 3hr C3 | 81.60 |
| C12 | FAM | GAPDH | Unkn | Muscle 3hr C1 | 81.60 |
| D01 | FAM | Actin | Unkn | Gill 1hr C4 | 82.80 |
| D02 | FAM | Actin | Unkn | Gill 1hr E4 | 82.60 |
| D03 | FAM | Actin | Unkn | Gill 3hr C4 | 82.60 |
| D04 | FAM | Actin | Unkn | Gill 3hr E4 | 82.60 |
| D05 | FAM | Actin | Unkn | Dg/Gonad 3hr C4 | 82.40 |
| D06 | FAM | Actin | Unkn | Muscle 3hr C2 | 82.80 |
| D07 | FAM | GAPDH | Unkn | Gill 1hr C4 | 81.60 |
| D08 | FAM | GAPDH | Unkn | Gill 1hr E4 | 81.60 |
| D09 | FAM | GAPDH | Unkn | Gill 3hr C4 | 81.60 |
| D10 | FAM | GAPDH | Unkn | Gill 3hr E4 | 81.60 |
| D11 | FAM | GAPDH | Unkn | Dg/Gonad 3hr C4 | 81.80 |
| D12 | FAM | GAPDH | Unkn | Muscle 3hr C2 | 81.80 |

| Well | Fluor | Target | Content | Sample | Melt Temp |
|------|-------|--------|---------|-----------------|-----------|
| E01 | FAM | Actin | Unkn | Gill 1hr C5 | 82.80 |
| E02 | FAM | Actin | Unkn | Gill 1hr E5 | 82.60 |
| E03 | FAM | Actin | Unkn | Gill 3hr C5 | 82.60 |
| E04 | FAM | Actin | Unkn | Gill 3hr E5 | 82.60 |
| E05 | FAM | Actin | Unkn | Dg/Gonad 3hr C6 | 82.60 |
| E06 | FAM | Actin | Unkn | Muscle 3hr C3 | 82.80 |
| E07 | FAM | GAPDH | Unkn | Gill 1hr C5 | 81.60 |
| E08 | FAM | GAPDH | Unkn | Gill 1hr E5 | 81.60 |
| E09 | FAM | GAPDH | Unkn | Gill 3hr C5 | 81.60 |
| E10 | FAM | GAPDH | Unkn | Gill 3hr E5 | 81.60 |
| E11 | FAM | GAPDH | Unkn | Dg/Gonad 3hr C6 | 81.60 |
| E12 | FAM | GAPDH | Unkn | Muscle 3hr C3 | 81.80 |
| F01 | FAM | Actin | Unkn | Gill 1hr C6 | 82.80 |
| F02 | FAM | Actin | Unkn | Gill 1hr E6 | 82.60 |
| F03 | FAM | Actin | Unkn | Gill 3hr C6 | 82.60 |
| F04 | FAM | Actin | Unkn | Gill 3hr E6 | 82.40 |
| F05 | FAM | Actin | Unkn | Mantle 3hr C1 | 82.60 |
| F06 | FAM | Actin | Unkn | Muscle 3hr C4 | 82.80 |
| F07 | FAM | GAPDH | Unkn | Gill 1hr C6 | 81.60 |
| F08 | FAM | GAPDH | Unkn | Gill 1hr E6 | 81.60 |
| F09 | FAM | GAPDH | Unkn | Gill 3hr C6 | 81.40 |
| F10 | FAM | GAPDH | Unkn | Gill 3hr E6 | 81.40 |
| F11 | FAM | GAPDH | Unkn | Mantle 3hr C1 | 81.60 |
| F12 | FAM | GAPDH | Unkn | Muscle 3hr C4 | 81.80 |
| G01 | FAM | Actin | Unkn | Gill 1hr C7 | 82.60 |
| G02 | FAM | Actin | Unkn | Gill 1hr E7 | 82.60 |
| G03 | FAM | Actin | Unkn | Gill 3hr C7 | 82.60 |
| G04 | FAM | Actin | Unkn | Gill 3hr E7 | 82.60 |
| G05 | FAM | Actin | Unkn | Mantle 3hr C2 | 82.60 |
| G06 | FAM | Actin | Unkn | Muscle 3hr C6 | 82.80 |
| G07 | FAM | GAPDH | Unkn | Gill 1hr C7 | 81.60 |
| G08 | FAM | GAPDH | Unkn | Gill 1hr E7 | 81.60 |
| G09 | FAM | GAPDH | Unkn | Gill 3hr C7 | 81.60 |
| G10 | FAM | GAPDH | Unkn | Gill 3hr E7 | 81.60 |
| G11 | FAM | GAPDH | Unkn | Mantle 3hr C2 | 81.60 |
| G12 | FAM | GAPDH | Unkn | Muscle 3hr C6 | 81.60 |
| H01 | FAM | Actin | Unkn | Gill 1hr C8 | 82.60 |
| H02 | FAM | Actin | Unkn | Gill 1hr E8 | 82.60 |
| H03 | FAM | Actin | Unkn | Gill 3hr C8 | 82.60 |
| H04 | FAM | Actin | Unkn | Gill 3hr E8 | 82.40 |
| H05 | FAM | Actin | Unkn | Mantle 3hr C3 | 82.60 |
| H06 | FAM | Actin | NTC | | None |
| H07 | FAM | GAPDH | Unkn | Gill 1hr C8 | 81.60 |
| H08 | FAM | GAPDH | Unkn | Gill 1hr E8 | 81.60 |
| H09 | FAM | GAPDH | Unkn | Gill 3hr C8 | 81.60 |
| H10 | FAM | GAPDH | Unkn | Gill 3hr E8 | 81.60 |
| H11 | FAM | GAPDH | Unkn | Mantle 3hr C3 | 81.60 |
| H12 | FAM | GAPDH | NTC | | None |

QC Parameters

| Description | Value | Use | Results | Exclude Wells | All excluded wells |
|---|-------|------|---------|---------------|--------------------|
| Negative control with a Cq less than | 38 | True | | False | |
| NTC with a Cq less than | 38 | True | | False | |
| NRT with a Cq less than | 38 | True | | False | |
| Positive control with a Cq greater than | 30 | True | | False | |
| Unknown without a Cq | N/A | True | | False | |
| Standard without a Cq | N/A | True | | False | |
| Efficiency greater than | 110.0 | True | | | |
| Efficiency less than | 90.0 | True | | | |
| Std Curve R ² less than | 0.980 | True | | | |
| Replicate group Cq Std Dev greater than | 0.20 | True | | False | |